



October 2021

# Student Voting Rates for Ohio State University

## 2020 NSLVE Campus Report

**October 2021**

**Dear Colleagues:**

We are pleased to send this tailored report containing your students' voting rates for 2020. This report contains three years of relevant topline data: 2016, 2018, and 2020. As always, we disaggregate the data so you can better identify and address gaps in participation.

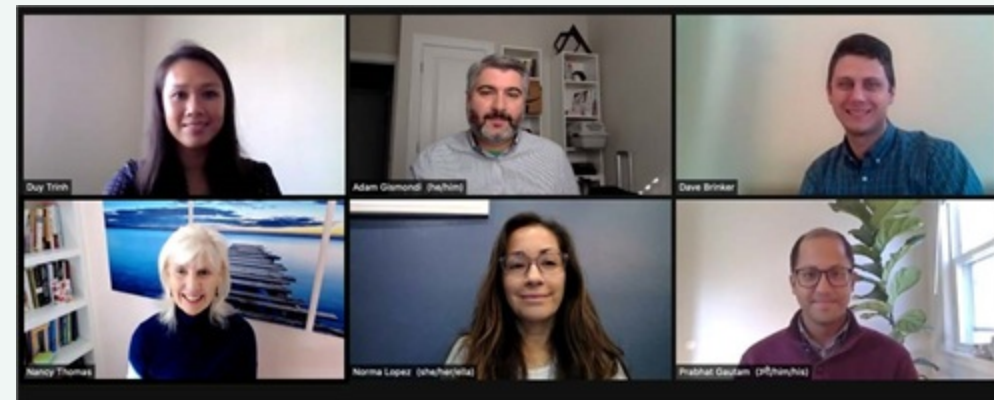
College and university students participated in record-breaking numbers in the 2020 election. In 2016, the Average Institutional Voting Rate was 53%. This year, it jumped to 66%. We encourage you to review Democracy Counts 2020, our most recent national report.

As in past years, we urge you to share this report widely and strategically, particularly with faculty who, in 2020, were often the most consistent communicators with students about ever-changing voting conditions and deadlines. We also urge you to review our recommendations for engaging elections to cultivate a robust and healthy campus climate for political engagement, discourse, equity, and participation: Election Imperatives (2019) and the more recent Election Imperatives: A Time of Physical Distancing and Social Action. Since "pervasive political discussions" and attentiveness to the campus culture around speech and academic freedom are among our top recommendations, we direct you to our discussion guides on talking about your NSLVE report, on free speech and inclusion, and on hot topics, our Making Sense of ... guides.

Finally, we always encourage you to work with us. Help us help you get better data by reaching out. Email [IDHE@Tufts.edu](mailto:IDHE@Tufts.edu) for more information. And as always, watch your inbox for our periodic newsletter, IDHE Update, for announcements about upcoming releases and new resources.

Congratulations on engaging your students in the 2020 election. Remember, student political learning is a year-round objective. Elections may be episodic, but student political engagement should not be.

All the Best,  
IDHE Team



**(Top Row from left) Duy Trinh, Program Administrator; Adam Gismondi, Director of Impact; Dave Brinker, Senior Researcher; (Bottom Row from left) Nancy Thomas, Director; Norma López, Postdoctoral Scholar; Prabhat Gautam, Data Manager.**

We also want to acknowledge and thank **Syed Golam Mohaimen, M.S. student in Data Science at Tufts University** for his contributions toward the creation of these reports.

# In This Report

This report presents data on student voter participation rates for your campus. The topline counts on page 5 tells you how many students voted, but we encourage you to look carefully at the data on subsequent pages to learn who voted. Data are presented in the form of vessel charts, overlapping donut charts, and tables.

	2014			2018			2014-2018 Change (p.p.)
	Enrolled	Voted	Rate (%)	Enrolled	Voted	Rate (%)	
Asian	-	-	-	-	-	-	-
American Indian/ Alaska Native	-	-	-	-	-	-	-
Black	-	-	-	-	-	-	-
Hispanic	-	-	-	-	-	-	-

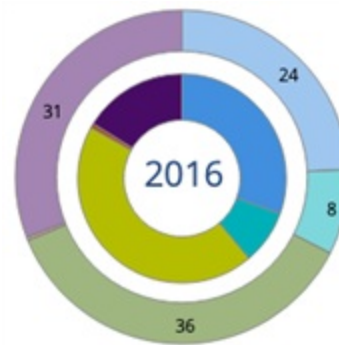
## Tables

The tables show, on the left-side columns, the numbers of students and the rates from 2016, 2018, and 2020. On the left-side, percentage point (p.p.) changes between 2016 and 2020. A red down arrow indicates a decrease, a green up arrow indicates an increase, and a yellow arrow pointing to the right indicates no change. "-" in these tables indicates that the data is unavailable/missing, or is available for 10 or less students.



## Vessel Chart

This chart shows rates out of 100%, with arrows to the right of each bar representing relevant national averages (medians), which you can find in IDHE's national report Democracy Counts 2020.



## Overlapping Donut Chart

This chart is used to show the breakdown of vote method utilization (page 10), with the outer ring showing your campus method utilization and the inner ring showing the national breakdown. These are described in percentages.

# Voting, Registration and Yield Rates

## YOUR INSTITUTION

75.0%

2020 Voting Rate

+10.0

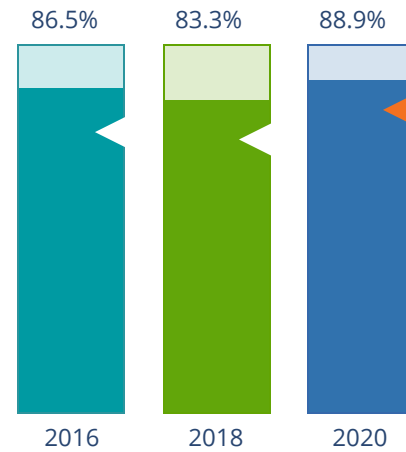
Change From 2016

## ALL INSTITUTIONS

66%

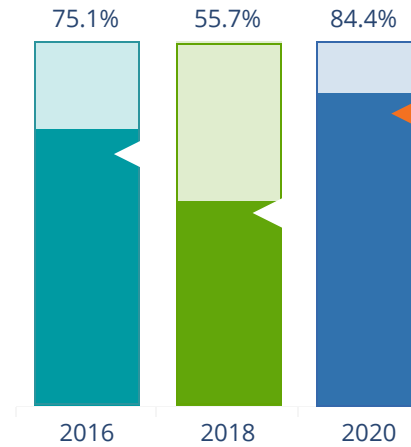
2020 Voting Rate

### REGISTRATION RATE



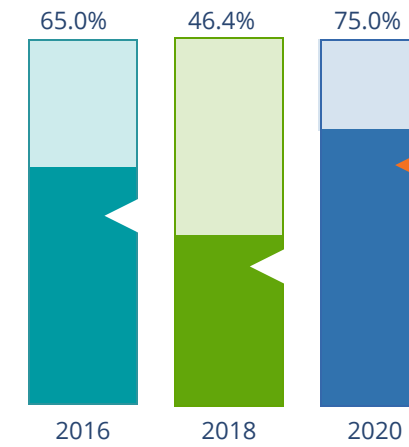
The **Registration Rate** is the percent of your voting-eligible students who registered to vote.

### VOTING RATE OF REGISTERED STUDENTS



The **Voting Rate of Registered Students** is the percent of registered students who voted on Election Day. We often refer to this as the “yield” rate.

### VOTING RATE



The **Voting Rate** is the percentage of eligible students who voted on Election Day. The voting rate is also the product of the registration and yield rates.

# Looking Closer

## Voting and Registration Rates

	2016	2018	2020	2016-2020 Change (p.p.)
<b>Total Student Enrollment</b>	65,583	66,348	66,596	↑ 1,013
(Age under 18/Unknown)	-	-	-	-
(NSC reported non-resident aliens)	6,121	6,376	5,495	↓ -626
(FERPA records blocked)	252	230	152	↓ -100
(Non-Degree Seeking Students)	1,971	836	395	↓ -1,576
<b>Total eligible voters</b>	57,236	58,903	60,552	↑ 3,316
<b>Number of students who registered</b>	49,517	49,094	53,848	↑ 4,331
<b>Number of students who voted</b>	37,176	27,348	45,436	↑ 8,260
<b>Registration Rate %</b>	87	83	89	↑ 2
<b>Voting Rate of Registered Students %</b>	75	56	84	↑ 9
<b>Voting Rate %</b>	65	46	75	↑ 10

**This page provides the numbers we used to calculate your voting, registration, and yield rates.** The sub-categories under total student enrollment are the adjustments that we make to account for students who are ineligible to vote due to age or citizenship status. We also exclude, when correctly flagged, students who are not pursuing degrees.

We have removed non-resident aliens (international students) based on your institution's enrollment submission to the National Student Clearinghouse. This is indicated by "NSC reported non-resident aliens" on this page.

## By Institution Types

2016 Voting Rate for All Institutions

**53%**

HIGH  
82%

LOW  
13%

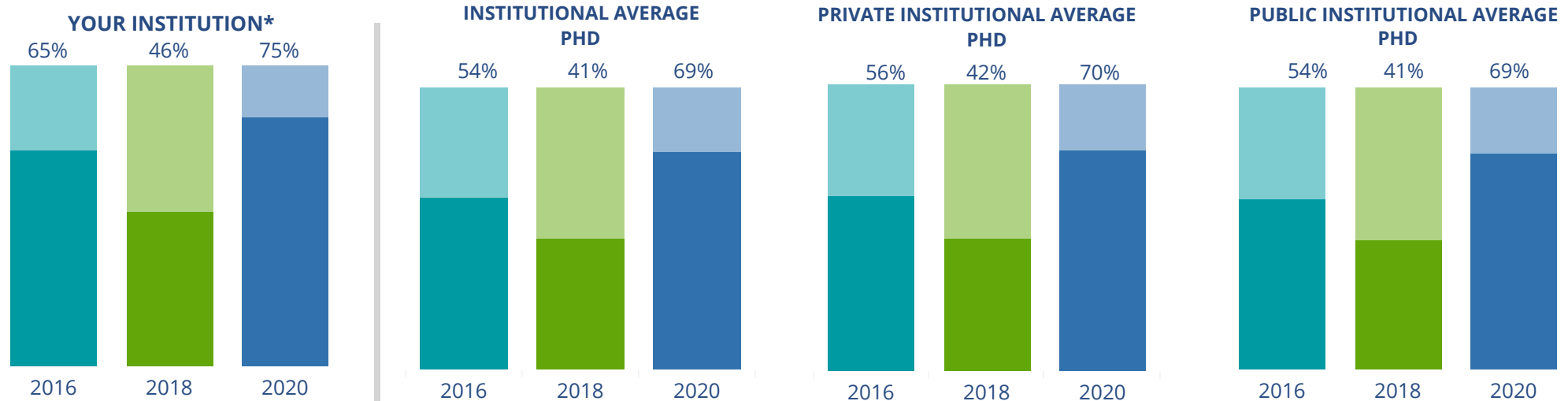
2020 Voting Rate for All Institutions

**66%**

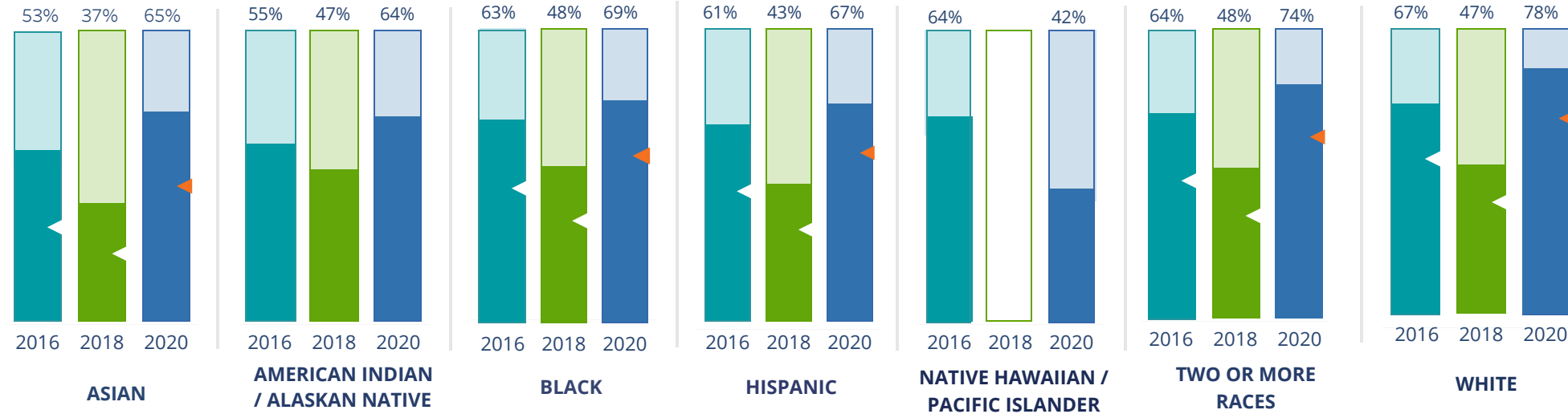
HIGH  
89%

LOW  
19%

These are estimated voting rates of your institution compared to the average voting rates of similar institutions in NSLVE. \*"Your Institution" chart is presented at a different scale.



## By Race / Ethnicity



**These are estimated voting rates for race / ethnicity groups.** These classifications are provided by campuses and are obtained following race reporting procedures\* defined by the National Center for Education Statistics of the Institute of Education Sciences (IES). Please see our FAQ for more detail on why we cannot report national benchmark for some of the demographic groups:

<https://tufts.app.box.com/v/idhe-nslve-report-faq>

If you notice unavailable/missing data in this page, it could mean any of the following for your institution: (i) does not report this data; (ii) did not provide this data in past years; (iii) does not separately submit data for one or more of the demographic groups, or (iv) the data is reported for 10 or fewer students.

\* <https://nces.ed.gov/ipeds/report-your-data/race-ethnicity-collecting-data-for-reporting-purposes>

# Looking Closer

## By Race/Ethnicity

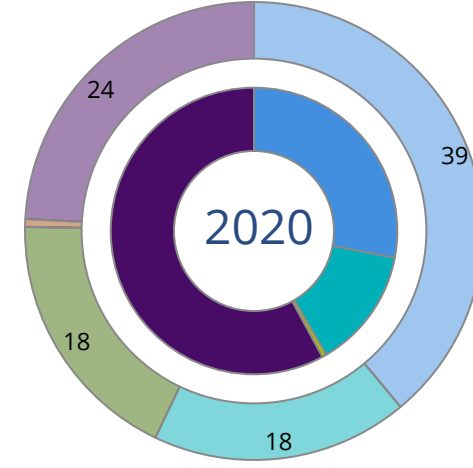
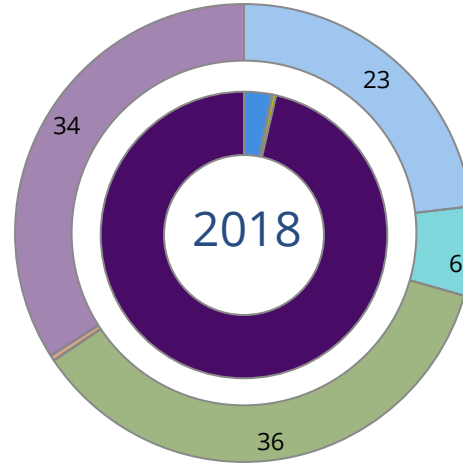
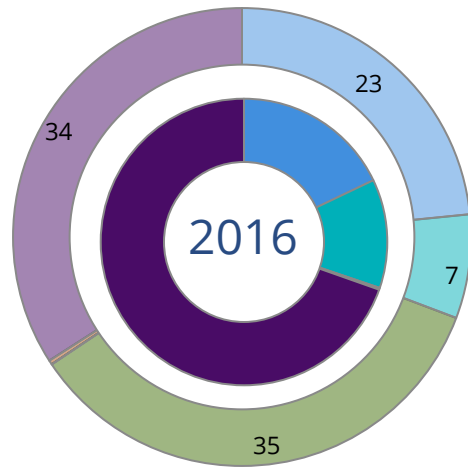
**This page provides the numbers we used to calculate race / ethnicity group voting rates.** We include the counts of students and the change in rates between the two most recent comparable election years. If you notice unavailable/missing data in this page, it could mean any of the following for your institution: (i) does not report this data; (ii) did not provide this data in past years; (iii) does not separately submit data for one or more of the demographic groups, or (iv) the data is reported for 10 or fewer students.

	2016			2018			2020			2016-2020 Change (p.p)
	Enrolled	Voted	Rate	Enrolled	Voted	Rate	Enrolled	Voted	Rate	
<b>Asian</b>	3,739	1,988	53	4,173	1,537	37	4,656	3,041	65	↑ 12
<b>American Indian/ Alaska Native</b>	83	46	55	55	26	47	47	30	64	↑ 8
<b>Black</b>	3,543	2,213	62	4,035	1,943	48	4,808	3,294	69	↑ 6
<b>Hispanic</b>	2,460	1,504	61	2,909	1,242	43	3,460	2,321	67	↑ 6
<b>Native Hawaiian/ Pacific Islander</b>	28	18	64	26	-	-	31	13	42	↓ -22
<b>2 or More Races</b>	1,934	1,245	64	2,355	1,118	47	2,650	1,950	74	↑ 9
<b>White</b>	43,339	28,835	67	43,102	20,413	47	42,840	33,281	78	↑ 11
<b>Race Unknown</b>	2,110	1,327	63	2,248	1,060	47	2,060	1,506	73	↑ 10



# By Voting Method

■ Not-In-Person 
 ■ Early Vote 
 ■ In-Person 
 ■ Other 
 ■ Provisional 
 ■ Unknown



	2016		2018		2020		2016-2020	
	Voted	Rate	Voted	Rate	Voted	Rate	Change (p.p.)	
<b>Early Vote</b>	4,584	12	17	0	6,177	14	1	↑
<b>In-Person on Election Day</b>	57	0	97	0	217	1	0	↑
<b>Not-In-Person</b>	6,651	18	846	3	12,701	28	10	↑
<b>Other</b>	-	-	-	-	-	-	-	-
<b>Provisional</b>	-	-	-	-	15	0	-	-
<b>Voting Method Unknown</b>	25,882	70	26,387	96	26,325	58	-12	↓

**These are estimated rates for vote method utilization, the number of students utilizing each method, and the percent of students utilizing each method.** Not all U.S. states provide information on vote method; voting method for voter files from these states are classified "Voting Method Unknown." For a list of these states, see our FAQ. <https://idhe.tufts.edu/nsive/nsive-faq#CampusReports>

## By Age Group

	2016	2018	2020
18-21	63%	42%	74%
22-24	64%	48%	75%
25-29	70%	57%	76%
30-39	74%	61%	77%
40-49	74%	66%	81%
50+	85%	76%	85%

**Voting is habit-forming and young voters will usually continue as voters in subsequent elections.**

Also, young voters are more likely to be contacted by campaigns and are visible, and therefore significant, to elected officials. While in the past, we have seen voting rates increase across age groups, in recent cycles, the most significant increases have been among first-time and the youngest voters. Some colleges serve primarily young students, traditionally viewed as students in the 18-21 or 22-24 categories here. Others have much higher numbers of enrolled older undergraduate or graduate students.

# Looking Closer

## By Age Group

**Here, we provide the numbers of students in each age category and the voting rates for each group.** These are based on the student's age on the day of the election, as calculated by the National Student Clearinghouse using data from student enrollment records.

	2016			2018			2020			2016-2020
	Enrolled	Voted	Rate	Enrolled	Voted	Rate	Enrolled	Voted	Rate	Change (p.p)
<b>18-21</b>	35,087	22,239	63	35,969	15,065	42	37,337	27,703	74	↑ 11
<b>22-24</b>	11,989	7,638	64	12,105	5,829	48	11,956	9,010	75	↑ 12
<b>25-29</b>	6,075	4,246	70	6,397	3,642	57	6,430	4,911	76	↑ 6
<b>30-39</b>	2,909	2,140	74	3,118	1,912	61	3,233	2,502	77	↑ 4
<b>40-49</b>	827	615	74	928	608	66	1,097	885	81	↑ 6
<b>50+</b>	349	298	85	386	292	76	499	425	85	↓ 0

# Looking Closer

## By Sex

	2016			2018			2020			2016-2020	
	Enrolled	Voted	Rate	Enrolled	Voted	Rate	Enrolled	Voted	Rate	Change (p.p)	
Female	28,713	19,983	70	29,986	15,045	50	31,736	24,782	78	↑	8
Male	28,519	17,189	60	28,916	12,303	43	28,815	20,654	72	↑	11

**These are estimated voting rates for sex groups and the numbers we used to calculate their voting rates.** These classifications are provided by campuses and are obtained following the reporting procedures defined by the National Center for Education Statistics (NCES) of the Institute of Education Sciences (IES). Presently, NCES requires institutions to report students as “Male” or “Female” only.\*

If you notice missing data in this page, it could mean any of the following for your institution: (i) does not report this data; (ii) did not provide this data in past years; (iii) does not separately submit data for one or more of the demographic groups, or (iv) the data is reported for 10 or fewer students.

\*<https://surveys.nces.ed.gov/ipeds/public/survey-materials/faq?faqid=11>

# Looking Closer

## By Education Level / Undergraduate Class Year

	2016			2018			2020			2016-2020	
	Enrolled	Voted	Rate (%)	Enrolled	Voted	Rate (%)	Enrolled	Voted	Rate (%)	Change (p.p)	
<b>EDUCATION LEVEL</b>											
<b>Undergraduate</b>	46,873	29,452	63	47,351	20,327	43	48,105	35,360	74	↑	11
<b>Graduate</b>	10,348	7,715	75	10,999	6,701	61	11,376	9,216	81	↑	6
<b>Class Unknown</b>	15	-	-	553	320	58	1,071	860	80		-
<b>CLASS YEAR</b>											
<b>First Year</b>	8,797	61	5,407	8,350	35	2,934	8,983	68	6,095	↑	6
<b>Second Year</b>	10,284	63	6,483	10,100	41	4,109	10,135	73	7,436	↑	10
<b>Upper Level</b>	27,107	64	17,243	28,141	46	13,058	28,443	76	21,490	↑	12
<b>ENROLLMENT STATUS</b>											
<b>Full-time</b>	52,811	34,236	65	53,723	24,547	46	54,500	40,868	75	↑	10
<b>Part-time</b>	4,425	2,940	66	5,180	2,801	54	6,052	4,568	75	↑	9

**These are estimated voting rates by Education Level (undergraduate/graduate), Class Year, and Enrollment Status (full-time/part-time), and the numbers we used to calculate these rates.**

If you notice missing data in this page, it could mean any of the following for your institution: (i) does not report this data; (ii) did not provide this data in past years; (iii) does not separately submit data for one or more of the demographic groups, or (iv) the data is reported for 10 or fewer students.

# By Field of Study

FIELDS	2016			2018			2020			2016-2020	
	Enrolled	Voted	Rate	Enrolled	Voted	Rate	Enrolled	Voted	Rate	Change (p.p)	
Architecture	588	377	64	650	341	52	583	450	77	↑ 13	
Area, Ethnic, Cultural, and Gender Studies	84	63	75	85	58	68	73	64	88	↑ 13	
Biological and Biomedical Sciences	5,179	3,330	64	5,459	2,423	44	5,796	4,234	73	↑ 9	
Business, Management, and Marketing	7,289	4,516	62	7,766	2,987	38	7,617	5,573	73	↑ 11	
Communication and Journalism	1,521	1,020	67	1,445	682	47	1,544	1,167	76	↑ 9	
Communications Technologies/Technicians	-	-	-	19	11	58	16	12	75	-	
Computer and Information Sciences	366	217	59	437	184	42	532	367	69	↑ 10	

**These are estimated voting rates by field of study, and the numbers we used to calculate the field of study rates.** For an explanation of CIP codes, please see our FAQ.\* There are roughly 8,000 fields of study among U.S. colleges and universities, so we provide rates for condensed categories.

\*<https://tufts.app.box.com/v/idhe-nslve-report-faq>

# By Field of Study

FIELDS	2016			2018			2020			2016-2020	
	Enrolled	Voted	Rate	Enrolled	Voted	Rate	Enrolled	Voted	Rate	Change (p.p)	
Education	3,099	2,181	70	3,106	1,608	52	3,106	2,417	78	↑	7
Engineering and Engineering Technologies	8,128	5,116	63	8,128	3,576	44	8,045	6,069	75	↑	12
English Language and Literature	846	623	74	714	468	66	628	497	79	↑	5
Family and Consumer/Human Sciences	1,100	694	63	1,096	445	41	1,062	756	71	↑	8
Foreign Languages, Literatures, and Lingui..	617	406	66	572	329	58	489	391	80	↑	14
Health Professions	8,277	5,655	68	8,984	4,313	48	9,277	7,196	78	↑	9
History	500	357	71	475	303	64	486	400	82	↑	11
Legal Professions and Studies	508	400	79	549	411	75	551	487	88	↑	10
Liberal Arts and Sciences, and Humanities	1,255	771	61	1,414	610	43	1,297	945	73	↑	11
Mathematics and Statistics	698	428	61	867	389	45	985	706	72	↑	10
Multi/Interdisciplinary Studies	3,230	1,815	56	2,908	968	33	3,110	1,947	63	↑	6
Natural Resources and Conservation	824	585	71	883	514	58	953	810	85	↑	14
Parks, Recreation, Leisure, and Fitness Stu..	789	416	53	713	229	32	675	450	67	↑	14
Philosophy and Religious Studies	104	70	67	102	57	56	94	75	80	↑	12

## By Field of Study

FIELDS	2016			2018			2020			2016-2020 Change (p.p)
	Enrolled	Voted	Rate	Enrolled	Voted	Rate	Enrolled	Voted	Rate	
Physical Sciences	1,165	772	66	1,133	572	50	1,112	848	76	↑ 10
Psychology	2,049	1,315	64	1,973	951	48	2,310	1,718	74	↑ 10
Public Administration and Social Service Professions	1,700	1,281	75	1,880	1,216	65	2,221	1,797	81	↑ 6
Social Sciences	3,130	2,133	68	3,145	1,722	55	3,141	2,416	77	↑ 9
Visual and Performing Arts	1,298	913	70	1,257	702	56	1,247	990	79	↑ 9
Unknown	534	332	62	951	486	51	1,513	1,167	77	↑ 15



# About This Report

## Thank you for participating in the National Study of Learning, Voting, and Engagement.

Since NSLVE's launch in 2013, nearly 1,200 colleges and universities have signed up to receive their voting rates for the 2012, 2014, 2016, 2018, and 2020 federal elections.

Along with others, your institution's participation in this study has allowed us to build a robust database of over 50 million college student records, about 10 million for each election year, that serve as a foundation for innovative research on college student political learning and engagement in democracy.

NSLVE is a signature initiative of the Institute for Democracy and Higher Education (IDHE) at Tufts University's Jonathan M. Tisch College of Civic Life. The mission of IDHE is to shift college and university priorities and culture to advance political learning, agency, and equity. We achieve our mission through research, resource development, technical assistance, and advocacy.

### About the Data

The voter registration and voting rates in this report reflect the percentage of your institution's students who were eligible to vote and who actually voted in the 2016, 2018, and 2020 elections.

These results are based on enrollment records your institution submitted to the National Student Clearinghouse (NSC) and publicly available voting files collected by L2 Political.

Enrollment lists are adjusted by deducting students under age 18 (at the time of the election), people identified as non-degree seeking and those identified by campuses as "nonresident aliens" (NRAs) (the federal government's category for mostly international students). Unfortunately, not all campuses report NRAs to NSC. For those campuses, we use IPEDS to calculate the number of NRA students on each campus and adjust NSC enrollment numbers to estimate the number of students to remove. We also quality check NRA removals by verifying that there is little to no discrepancy between the number of international students reported by the campus to IPEDS and to NSC. We cannot adjust subgroup analyses absent identification of NRAs verified by the process above. We welcome closer partnerships with individual colleges and universities to provide more accurate rates. For more on the data and the matching process, see our FAQ on Campus Reports.

Ohio State University

Thank you for the work you do to improve your students' political learning and engagement. We hope that you find your NSLVE report useful. For up-to-date news on NSLVE data, resources, and to sign up for our newsletter visit: <https://idhe.tufts.edu>.

References: IDHE encourages report recipients to share this report as broadly as possible, including posting it on the college or university's website. When doing so, please use the following citation: Institute for Democracy & Higher Education: National Study of Learning, Voting and Engagement. (2021). 2016, 2018, and 2020 report for \_\_\_\_\_ [name of institution]. Medford, MA.



Barnum Hall  
163 Packard Ave.  
Medford, MA 02155

tischcollege@tufts.edu  
617.627.3453



Institute for Democracy & Higher Education:  
National Study of Learning, Voting, and Engagement  
Barnum Hall, Medford, MA 02155

Follow Us on Twitter: @TuftsIDHE  
NSLVE@tufts.edu  
617.627.0620